

around

9:00



check in begins...hello

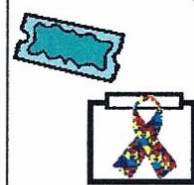


around

9:00



raffle and autism awareness store open



around

9:30



family fun activities begin

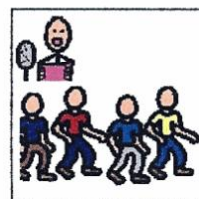


around

10:30



welcome and walk starts



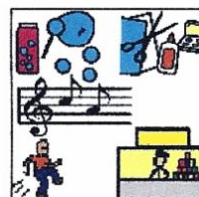
or

around

10:30



more fun activities and music

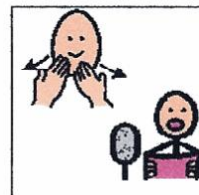


around

11:30



thank you announcements

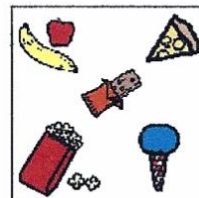


around

11:45



pizza and snacks



around

12:30



raffle winners



around

1:30



the end...goodbye

